



Solar Skylight Blind Installation

For Roto® & Fakro® Roof Windows



BLC-1164

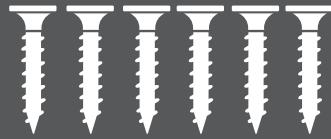


Components

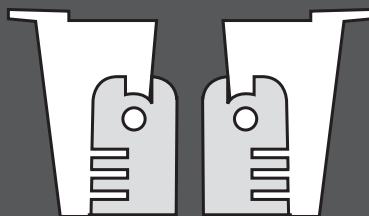
Check all the components have been supplied



Remote control



Screws (x6)



Installation Brackets (x2)



Side Rails (x2)



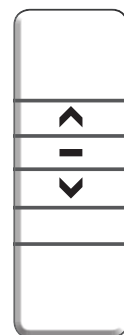
Cassette (x1)

Tools Required



WARNING

DO NOT OPERATE REMOTE CONTROL UNTIL THE BLIND HAS BEEN FULLY INSTALLED.





Instructions

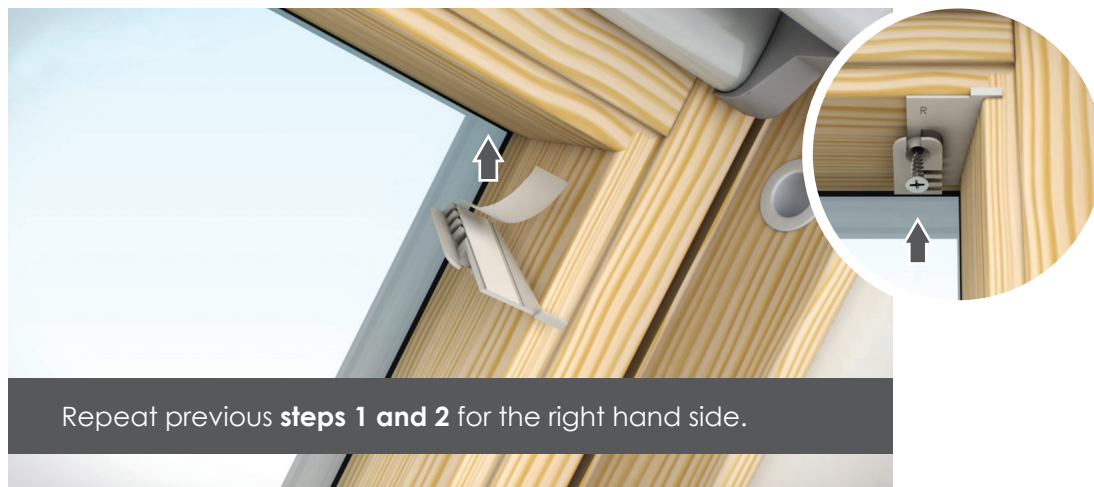
1



2



3



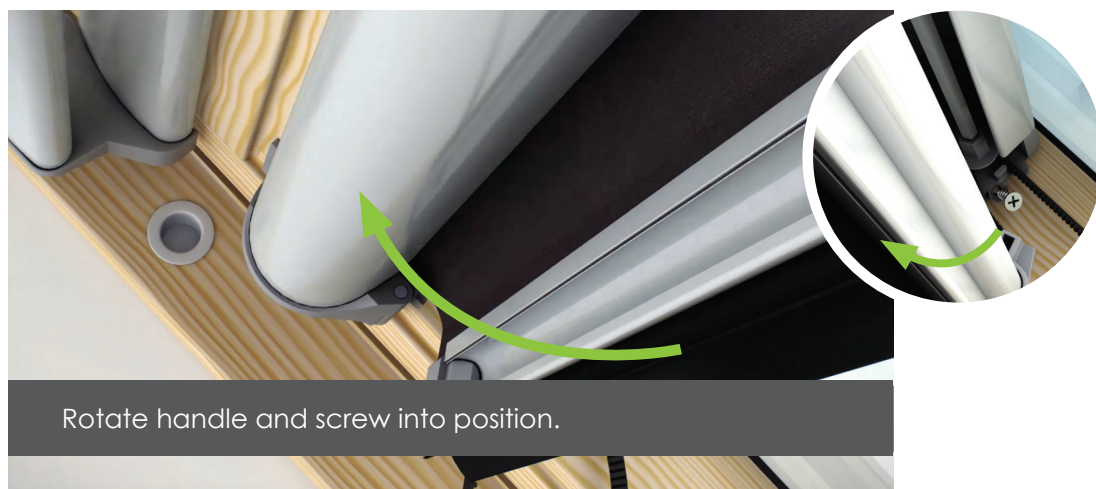


4



Align cassette with installation bracket and push cassette tight to frame.

5



Rotate handle and screw into position.

6



Repeat step 5 for right hand side.





7



8



9





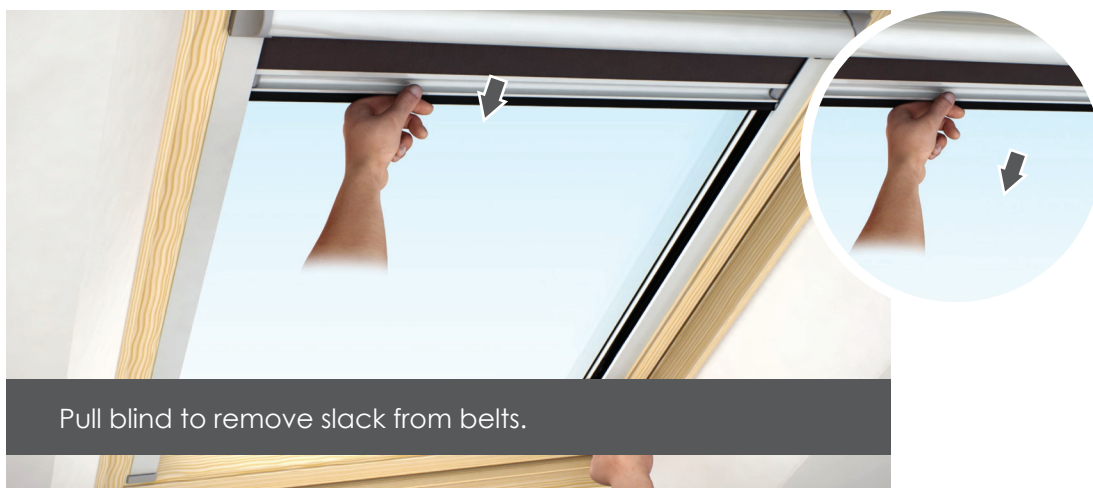
10



11



12



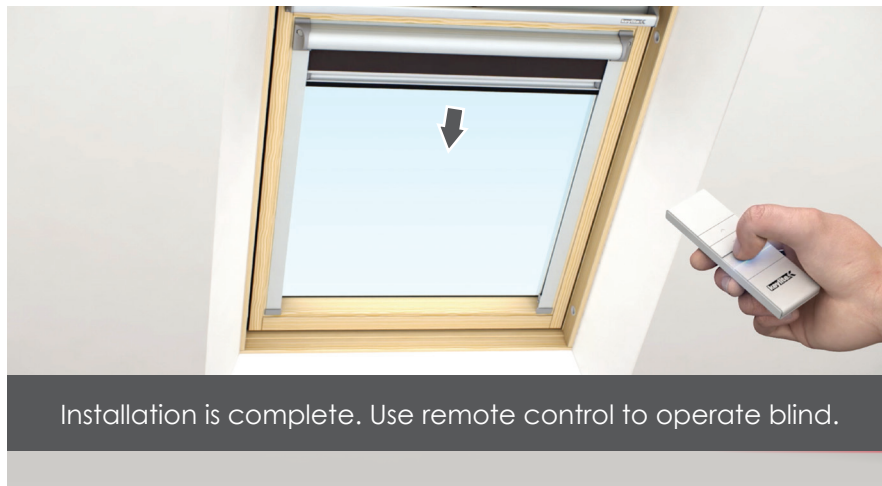


13



Push tensioners until they click into place.

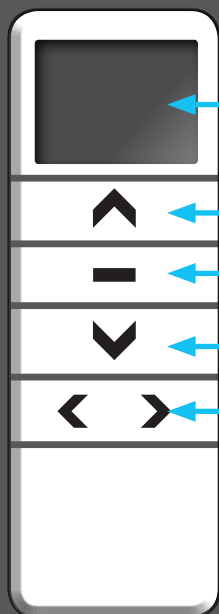
14



Installation is complete. Use remote control to operate blind.



Blind Operation



CHANNEL
DISPLAY
SCREEN

UP

STOP

DOWN

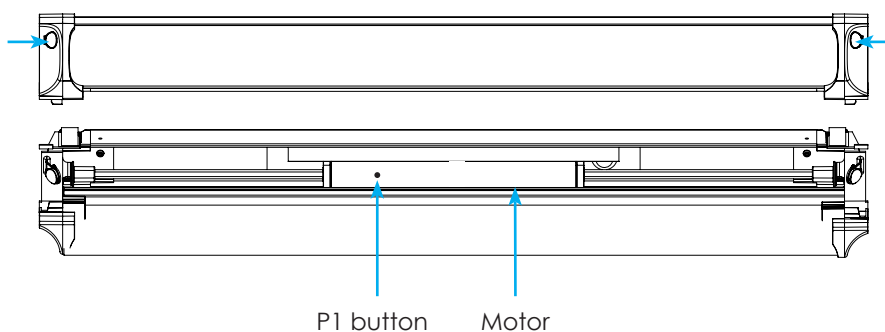
CHANNEL
SELECTION

(use to select
the required
channel
required)

PAIRING THE REMOTE

When using a multichannel remote the channel number the user wishes to use must be selected first on the remote before pairing.

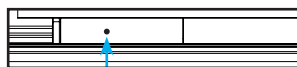
Open the blind cassette by pressing the 2 buttons on either end of the cassette to release and rotate forward. **IMPORTANT** after pairing your remote control please ensure blind cassette is fully closed.



Step 1.

Using the pointer tool provided hold the P1 button for approx 2 seconds until the motor responds with 1 jog.

jog = small movement of motor



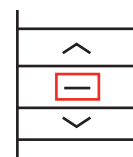
Motor Response

Approx 2 seconds ⌚ ↓↑ jog x 1

Step 2.

Press and hold stop on the remote control for approx 2 seconds or until motor responds with 2 jogs.

↓↑ jog x 2



Step 3.

Please ensure to close blind cassette before operating.
The remote should now be paired and operate the blind.

To add additional blinds select another channel on the remote and repeat process above.

OPERATION

Close the blind: press and hold the down button on the remote control for 1 second then release the blind will begin to close, the blind will stop automatically at the bottom of the window.

Open the blind: press and hold the up button on the remote control for 1 second then release the blind will begin to open, the blind will stop automatically at the top of the window.

The blind can be stopped at any point during an open or close cycle by pressing the stop button for 1 second then releasing.

To operate multiple blinds simultaneously select **channel 0** on the remote control.