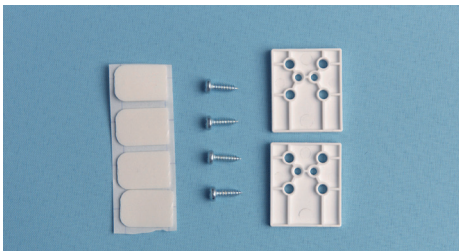


## Fitting Blind to PVC Frame

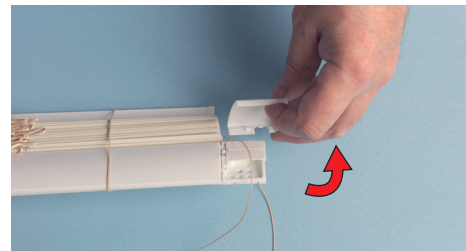
See overleaf for additional notes on; **Fitting Blinds to Timber Frames (TF)**



1. Fitting tools required include star point magnetic screwdriver (TP486), scissors and Ø2.5mm drill bit. (for TF see step b1 overleaf).



2. Accessories pack (packing pieces as required).



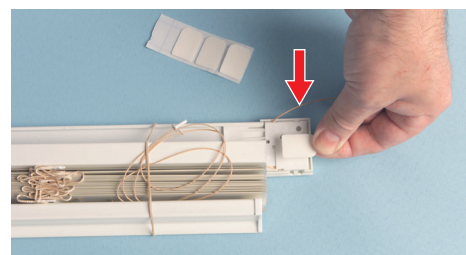
3. Unclip trimcap on both sides.



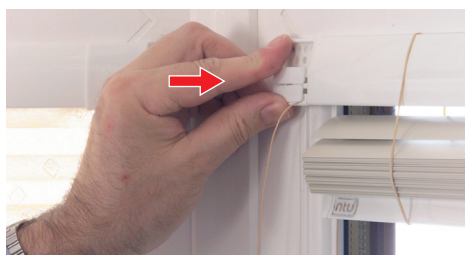
4. Using blind, mark positions for the cord grommet holes. (for TF cont. step b2 overleaf)



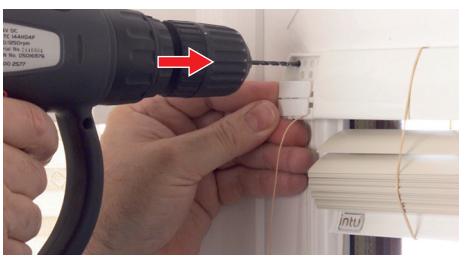
5. With the drill at 90° to the surface, drill one Ø2.5mm hole on each side.



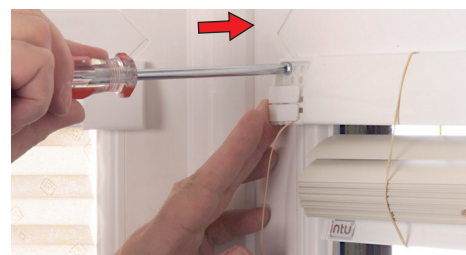
6. Attach double sided adhesive pad.



7. Stick blind onto frame leaving rubber band around blind.



8. Drill two Ø2.5mm holes on each side.



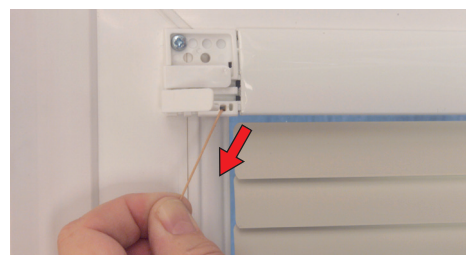
9. Hand screw fixings. (for TF cont. steps b3 & b4 overleaf).



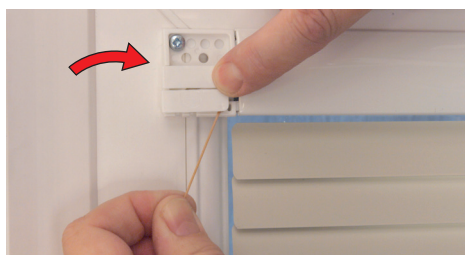
10. Push cord knot into hole, push fixing grommet into hole, aligning groove to cord.



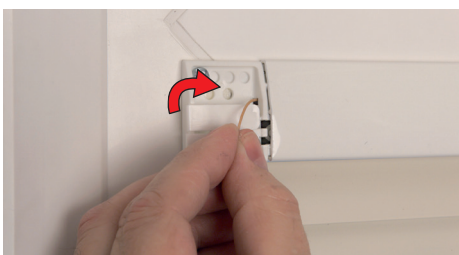
11. Holding button, pull cord tight to secure.



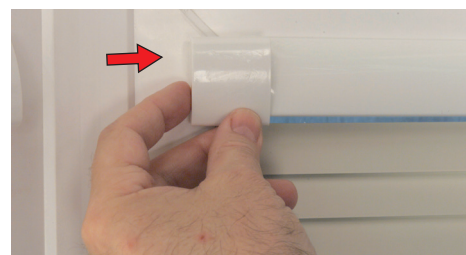
12. Remove rubber band. Carefully release locking gate. Pull cord to tension approx. equal on both sides.



13. Press locking gate closed to secure cord.



14. Cut-off excess cord leaving 100mm min. Tuck through hole in endcap.



15. Clip on trimcaps. (Final step overleaf)

## Fitting Blind to Timber Frame



b1. Fitting tools required include star point magnetic screwdriver (TP486), scissors and Ø4mm drill bit.



b2. Mark position as outlined in step 4 (overleaf). Drill one Ø4mm hole to a depth of 10mm on both sides. **(cont. step 6 overleaf)**



b3. Screw in brass insert until flush with timber surface.



b4. Push knot into brass insert, push grommet into brass insert, aligning groove to cord. **(cont. step 11 overleaf).**

## Final Step for PVC/Timber Frame mounted blinds



16. Check the blind operation, raise/lower and open/close is satisfactory.