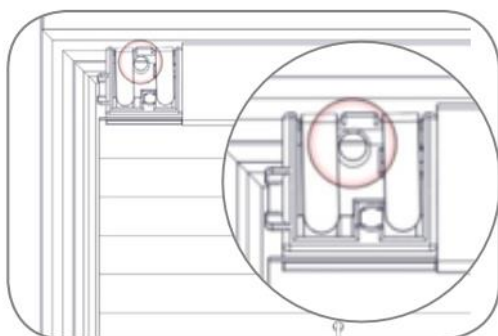


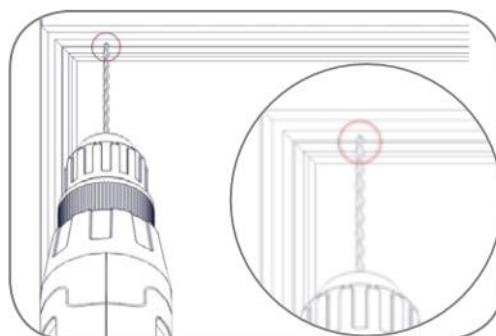
INTU Micro Screw Fit

You will need

- A drill
- Drill bits - Headrail: 2.5mm - Bottomrail: 3mm, 4mm and 4.5mm (depending on install, see page 7)
- 1x Phillips screwdriver
- 1x sharp knife or scissors
- 1x pen or pencil (optional)



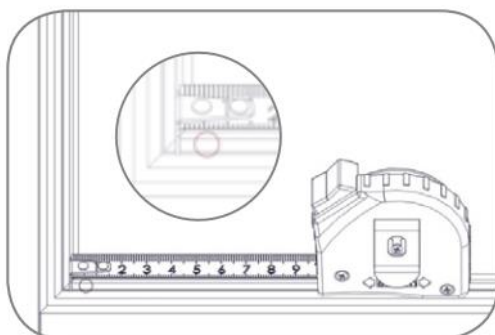
1. Place your blind against the frame of your door or window ensuring the back of the blind is parallel to the glass and the endcap sits comfortably on the bead. Place a small mark where the centre hole of the endcap is. Repeat this for both headrail endcaps.



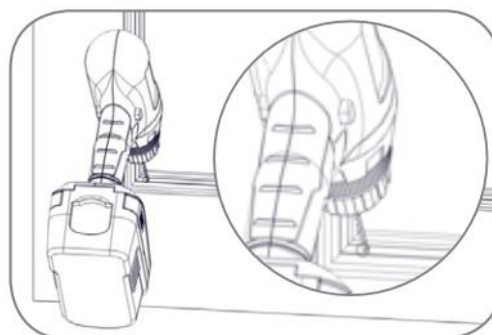
2. Using your mark as a guide. Drill into the bead at 45°. Repeat this process on the other side. (2.5mm drill bit).

Note: If installing into a square bead you will need to mark through the endcap and the right angle adaptor.

continued...

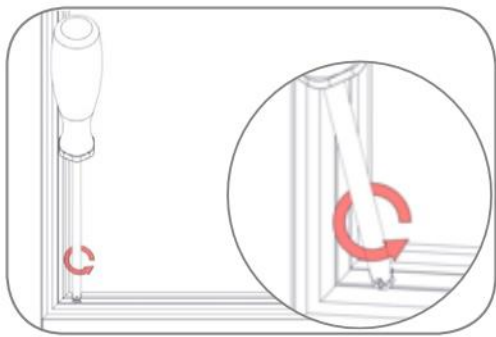


3. Mark 6mm from the bottom corner of the frame. Repeat this on the other side.



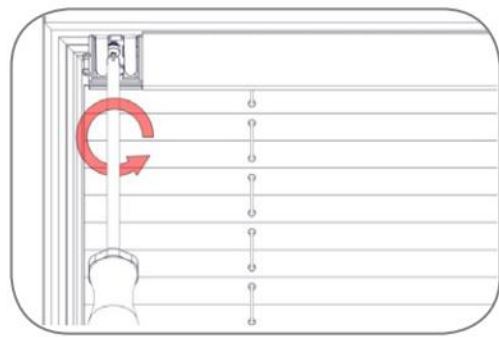
4. Drill as per table.

	ALUMINIUM/PVC	TIMBER
Blind Width < 590mm	2.5mm drill bit	4mm drill bit
Blind Width > 590mm	3mm drill bit	5.5mm drill bit

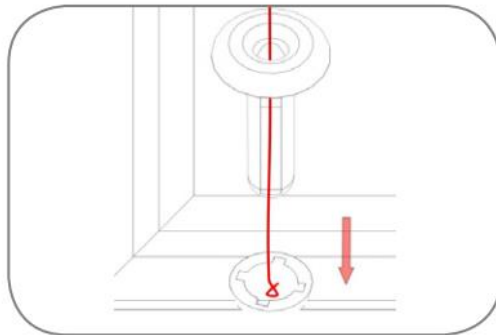


For wooden beads only

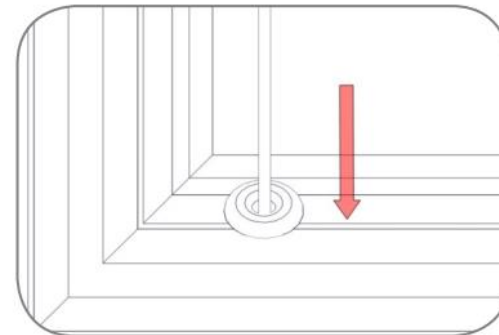
Using a No.1 Philips screwdriver, screw a brass bush into the pilot hole on the bottom bead. Repeat on the other side.



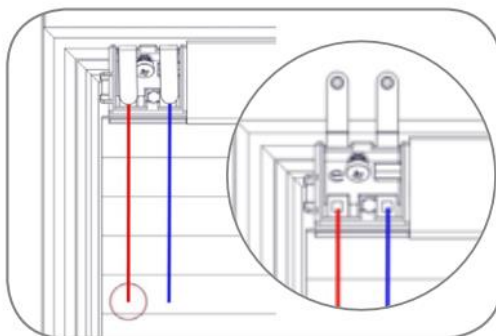
5. Line the blind up with the pilot holes in the top bead. Using the screws provided, screw the blind to the bead of the window/door.



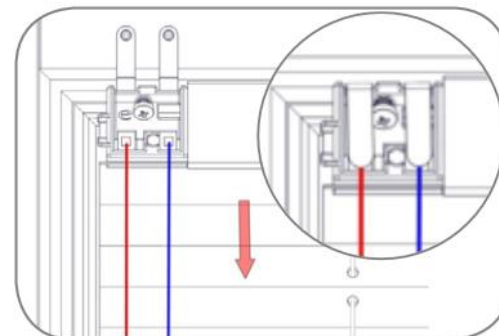
6. Insert the knot(s) on the loose cord into the pilot hole on the bottom bead followed by the bead grommet.



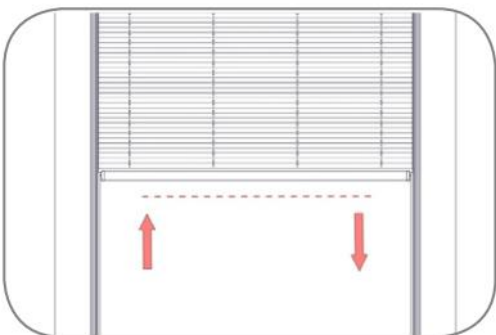
7. To secure the bead grommet ensure the cords are exiting the bead grommet towards you. Push the grommet until it is located fully. The cords should now be secured into the bead.



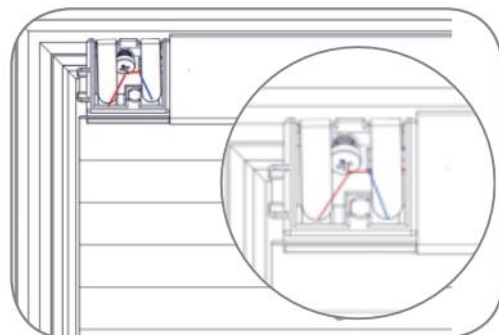
8. To tension blind, firmly hold the dangling cord from the headrail endcap and then open the gate. Repeat on the other side.



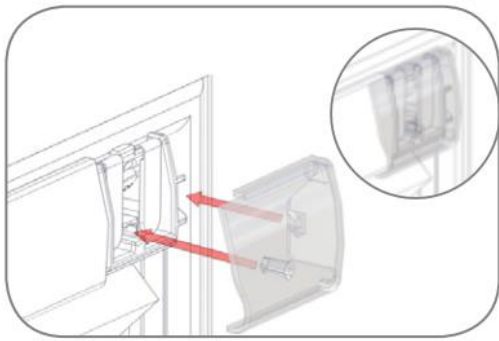
9. Slowly pull the cords until you feel resistance on both cords. Close the gate to secure the cord. Repeat this with all gates.



10. Test the tension by raising the blind, ensure it stays fully raised when released. Repeat the previous 2 steps if required. Ensure bottom bar is straight by adjusting it from side to side.



11. When satisfied with the tension, shorten the cords dangling out of the closed gate to 100mm and pass them through the gap on the side of the endcap to hide them. Repeat on other side.



12. Attach endcap cover by aligning the clip on the side with the clip on the endcap. Push the endcap in fully until a click is heard.